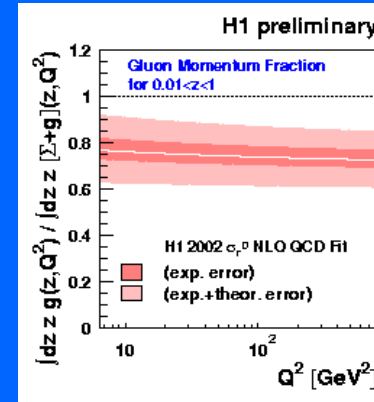
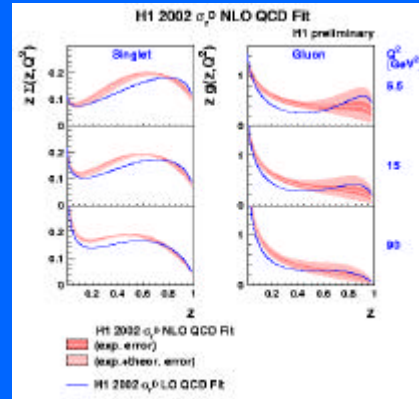
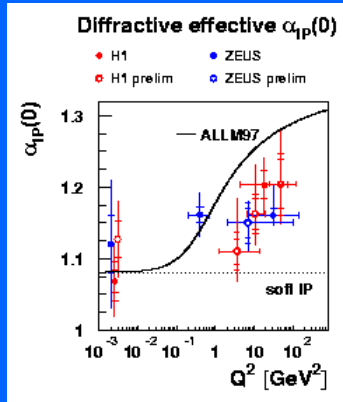
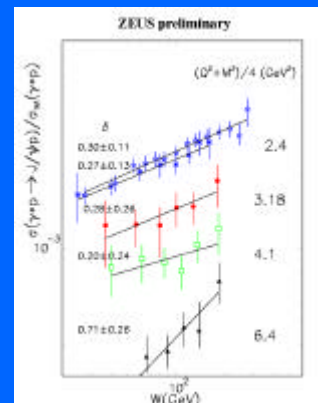
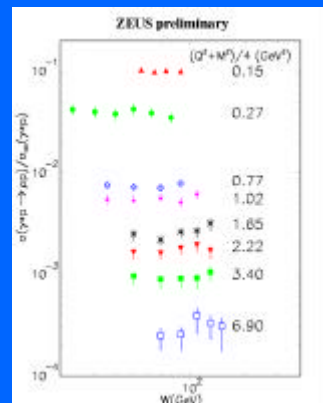
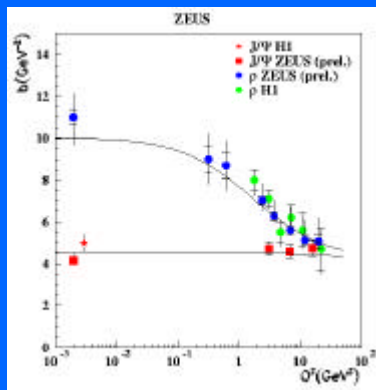


Summary of diffraction at HERA



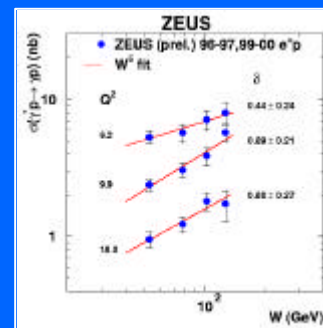
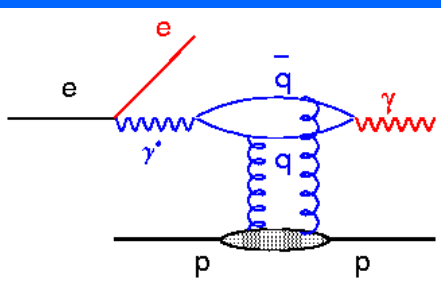
Inclusive

- Dominated by gluons
- Close to the unitarity limit



Vector mesons

- ρ size shrinks with Q^2
- large conf. of σ_T suppressed
- σ_V / σ_{tot} flat for ρ, rises for J/ψ



DVCS

- σ gets steeper with Q^2
- large conf. of σ_T suppressed
- good process for GPDs

Dijets - CDF

